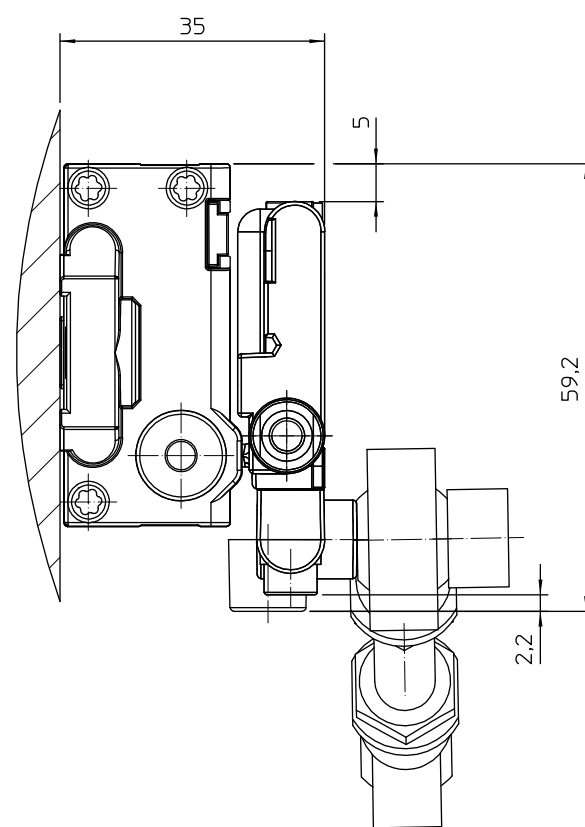
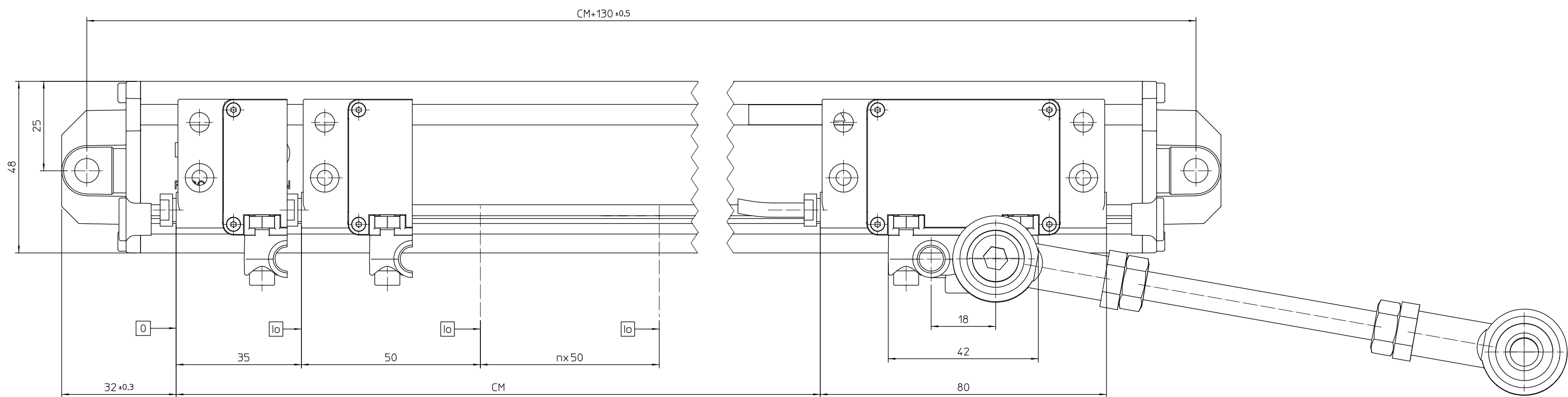


Technical drawing of the CM-144 antenna. The drawing includes a side view on the left and a front view on the right. The side view shows a base with a height of 24 and a mounting bracket with a height of 10. The front view shows the antenna's profile with a total length of CM-144. A vertical dimension of 45.16 is indicated from the base to the center of the antenna. A detail view of the antenna's end shows a diameter of 9.6 and surface finish requirements of 0.5G and 0.1.



CM = Curso medición
CM = Measuring length
G = Guía máquina
G = Machine guideway
0 = Comienzo curso medición CM
0 = Code start value
lo = Marca de referencia
lo = Reference marks

						Escala: 1:1
						mm Tolerancing ISO 8015 ISO 2768 - m H < 6 mm±0.2 mm
Nº	Modificado		Propu.	Vº Bº	Fecha	
Nº	Designación	PB-920	Cant.	Material	Acabado	Tratamiento
Plano Nº		El 05-10-16		Fagor Automation S. Coop.		
Sustituye a:		Dibujado Sormen		20500 Mandragón		
		Comprobado				
4	1	3	1	2	1	1